

IAM SERIES

H2 MODELS

INDEX

23	TECHNICAL DATA
24	DIMENSIONAL DRAWINGS
32	POWER CHARTS
34	SIDE LOAD CHARTS
38	ORDERING INSTRUCTIONS

www.Laheghi.com

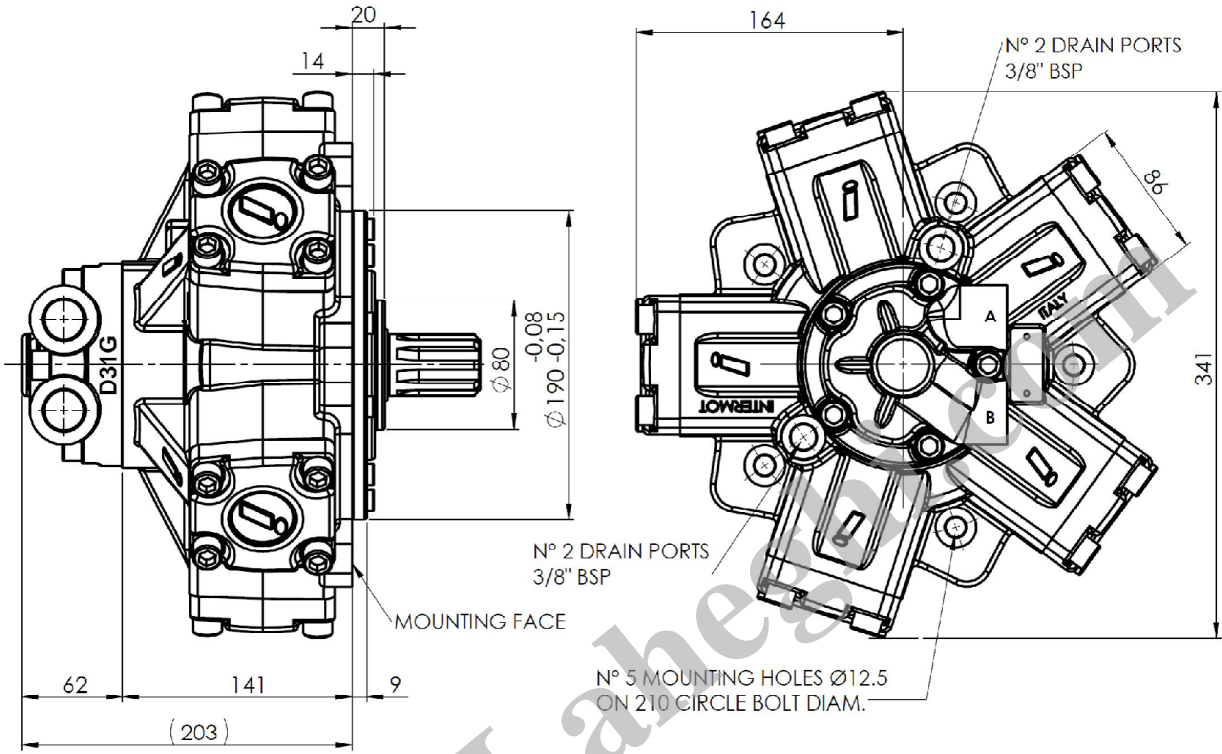
IAM H2 - TECHNICAL DATA

MODEL	N° of pistons	Displacement	Specific Torque	Pressure			Speed		Max Case Pressure	Max Power	Dry Weight	Inertia moment of rotating parts		
				Max Cont.	Max Int.	Peak	Max Continuous	Peak						
		cc/rev	Nm/bar	bar	bar	bar	rpm	rpm	bar	hp	kW	kg	kg cm ²	
IAM H2	200	5	198	3,1	250	300	350	800	900	6	66	49	42	27
	250	5	255	4,1	250	300	350	750	850	6	66	49	42	27
	300	5	304	4,8	250	300	350	750	850	6	66	49	42	27
	350	5	362	5,8	250	300	350	650	750	6	66	49	42	27
	400	5	425	6,8	250	300	350	600	700	6	66	49	42	27
	500	5	493	7,8	250	300	350	500	600	6	66	49	42	27
	600	5	565	9,0	250	300	350	500	600	6	66	49	42	27

www.Laheghi.com

IAM H2 - DIMENSIONAL DRAWINGS

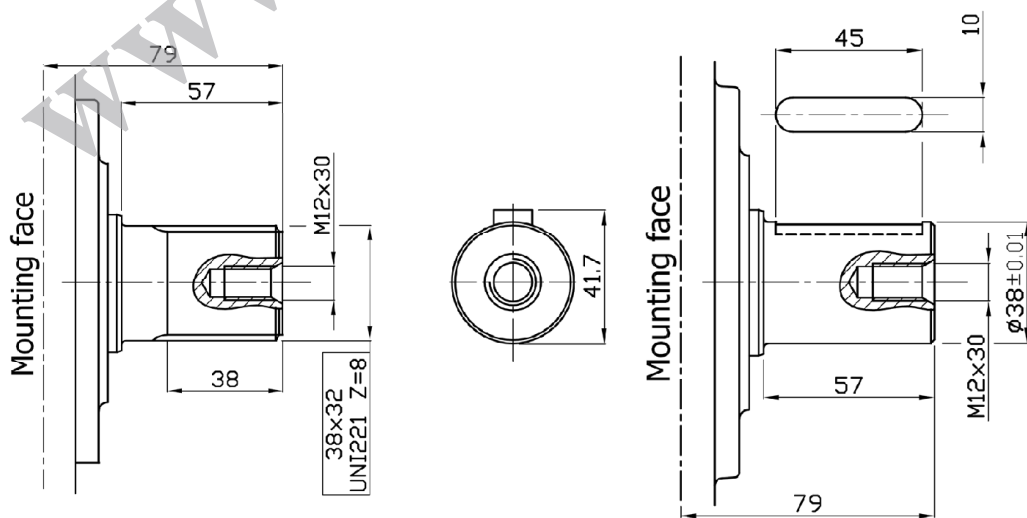
IAM 200 – 250 – 300 – 350 H2



SHAFT OPTIONS

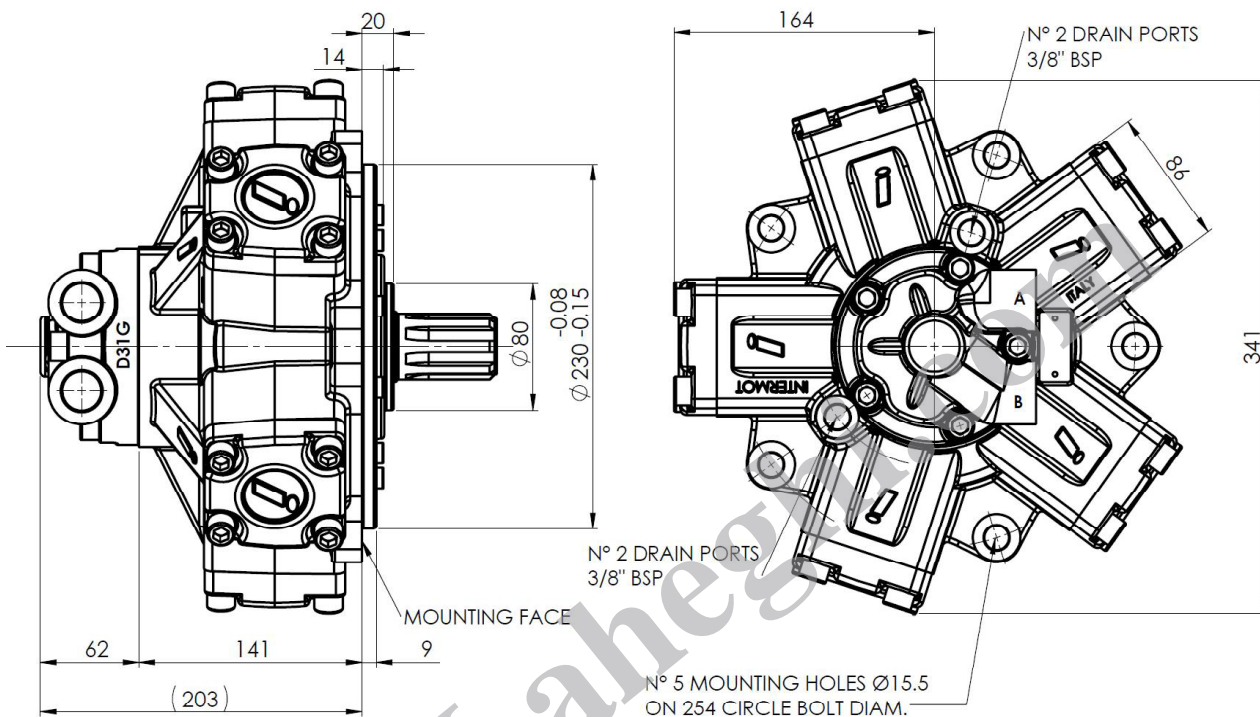
A0: Standard splined shaft

A2: Parallel shaft on request



FEMALE SHAFT AVAILABLE UPON REQUEST 40x3x12x9H DIN 5480 (300 cc/Rev only)

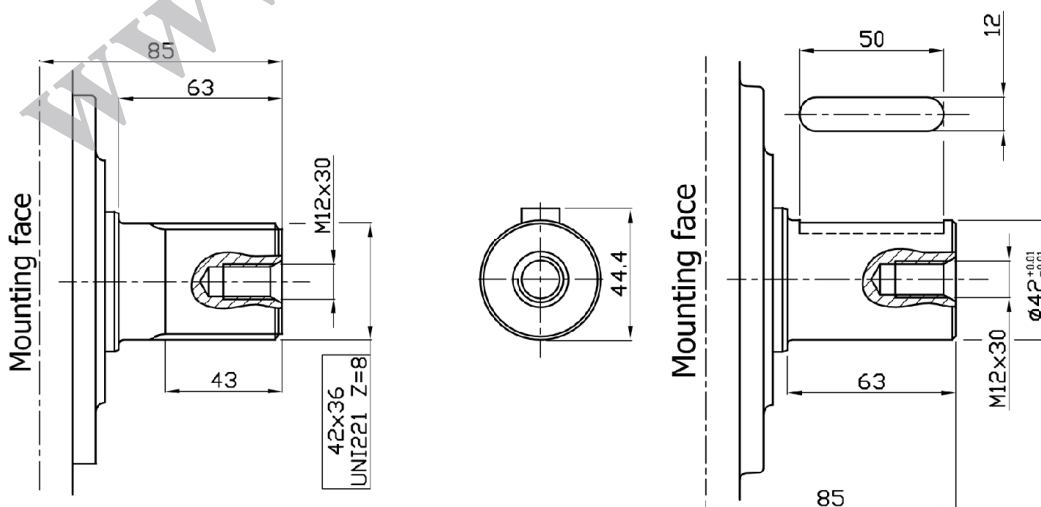
IAM 400 – 500 – 600 H2



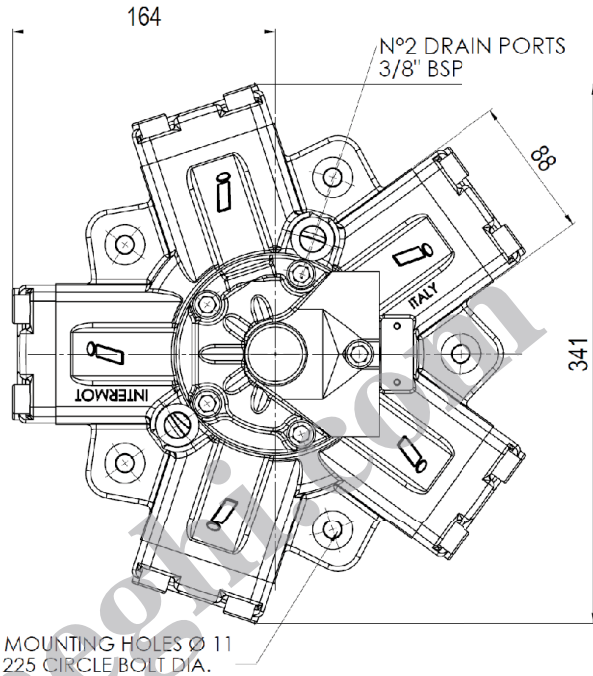
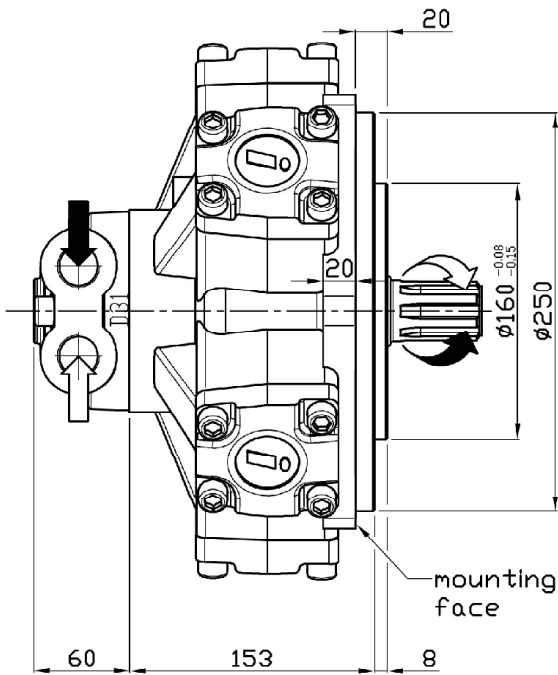
SHAFT OPTIONS

A0: Standard splined shaft

A2: Parallel shaft on request

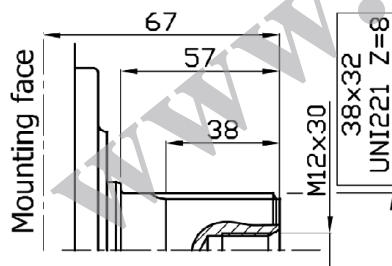


IAM 190/C H2



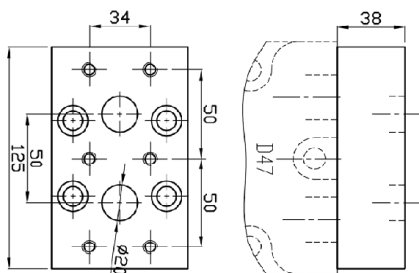
SHAFT OPTIONS

A0: Standard splined shaft

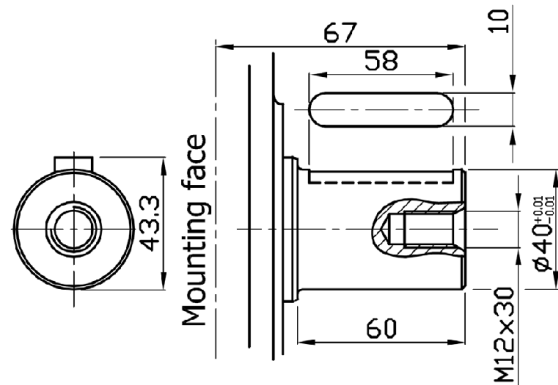


FL1: Connection block

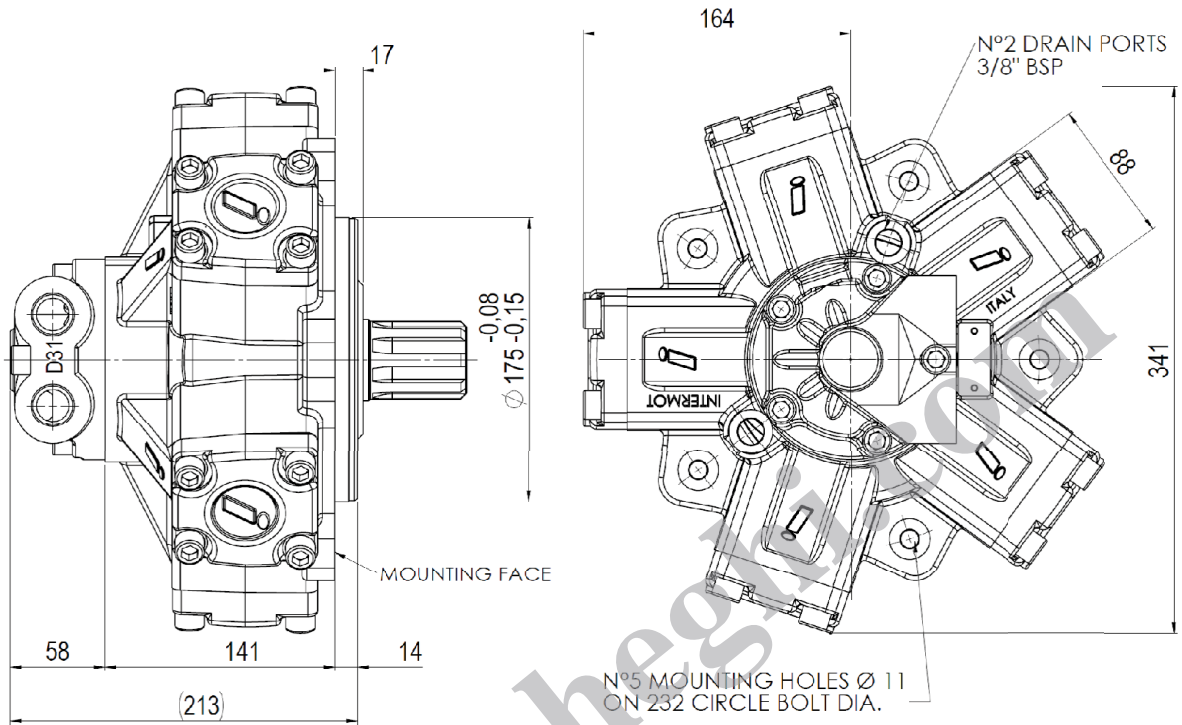
Connection block, fitting D47 distributor, for motor MR 160/190/250/300



A2: Parallel shaft on request

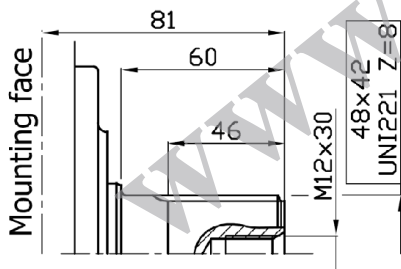


IAM 300/C H2



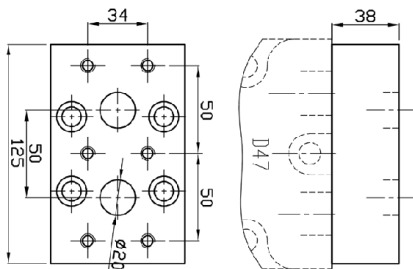
SHAFT OPTIONS

A0: Standard splined shaft



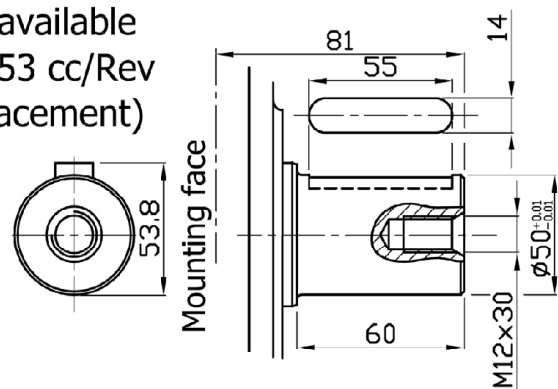
FL1: Connection block

Connection block, fitting D47 distributor, for motor MR 160/190/250/300

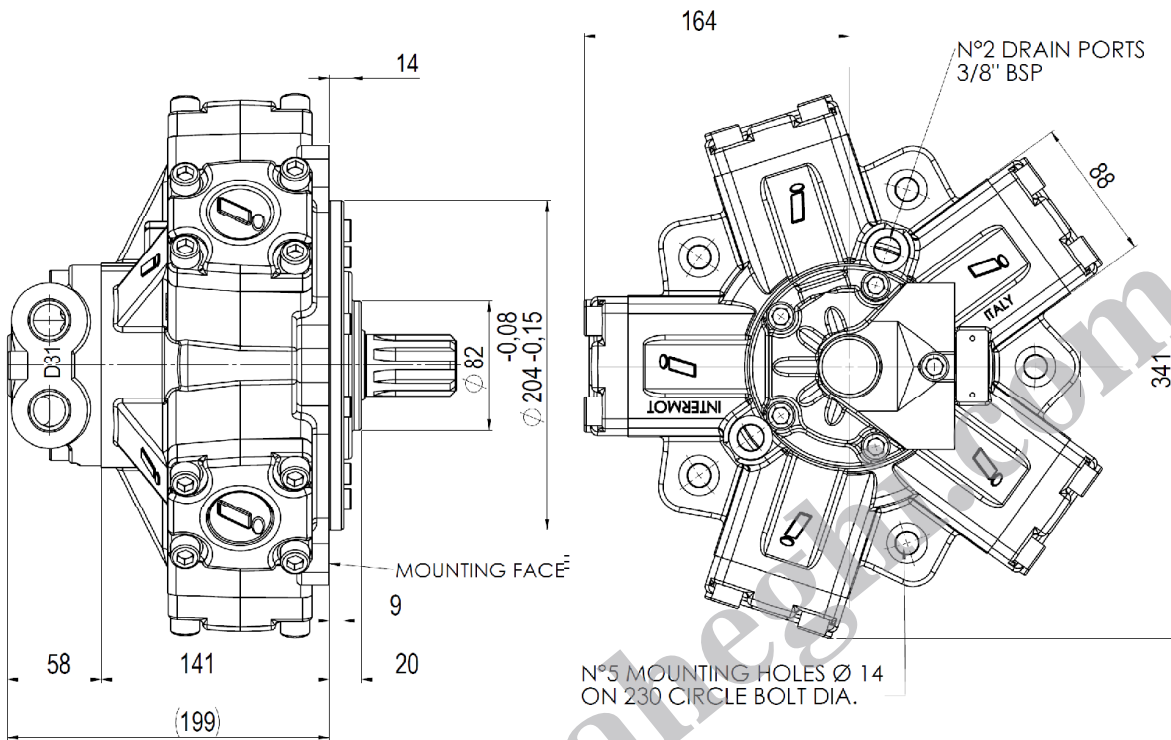


A2: Parallel shaft on request

(not available for 253 cc/Rev displacement)

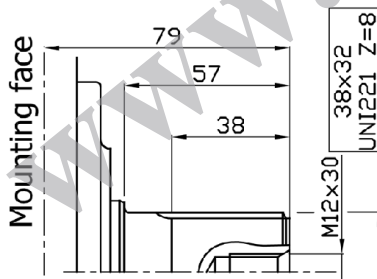


IAM 200/B10 H2

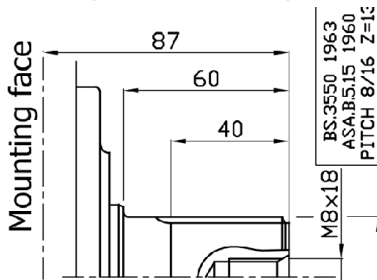


SHAFT OPTIONS

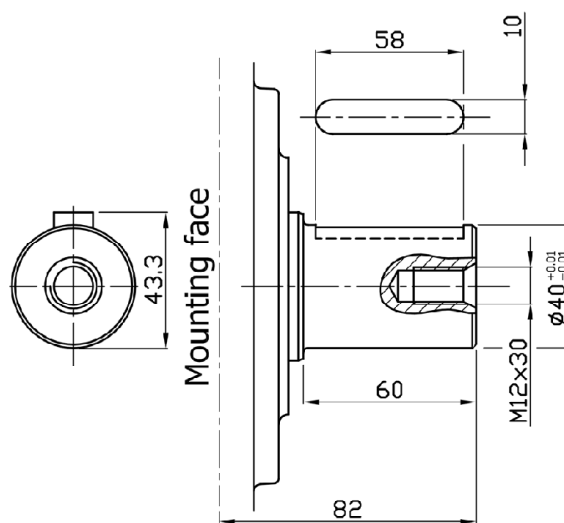
A0: Standard splined shaft



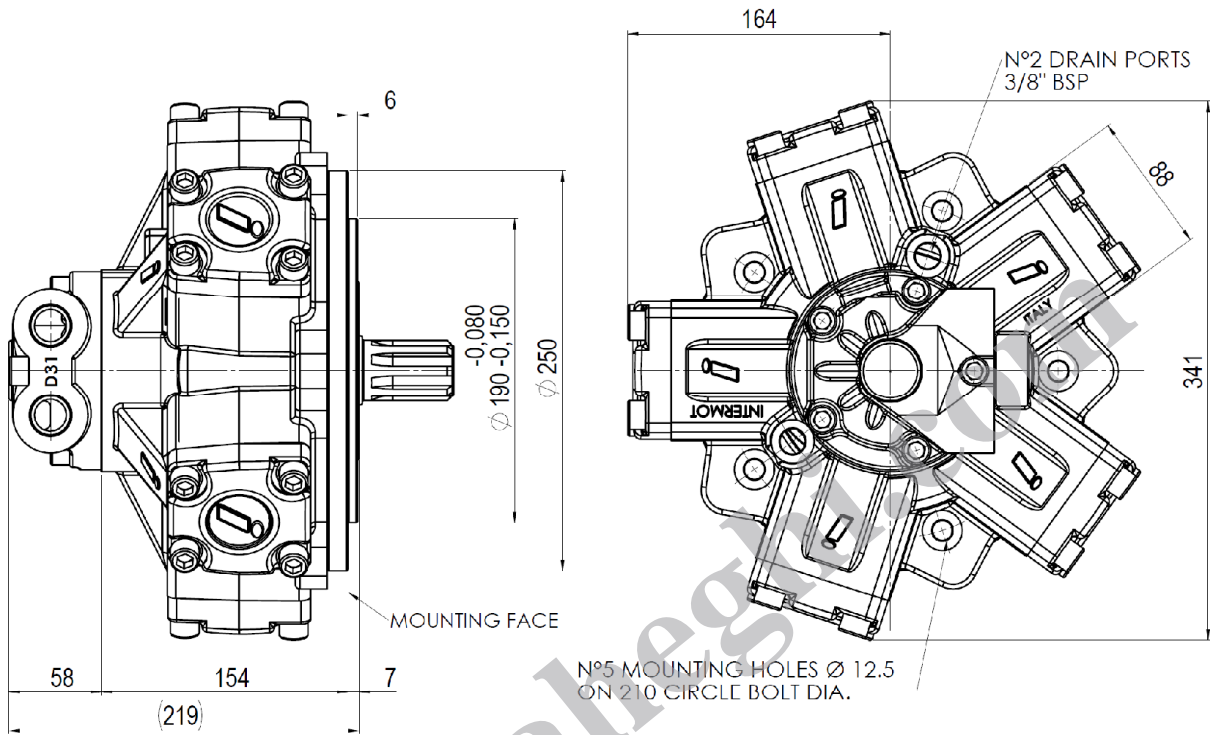
A1: Splined shaft on request



A2: Parallel shaft on request



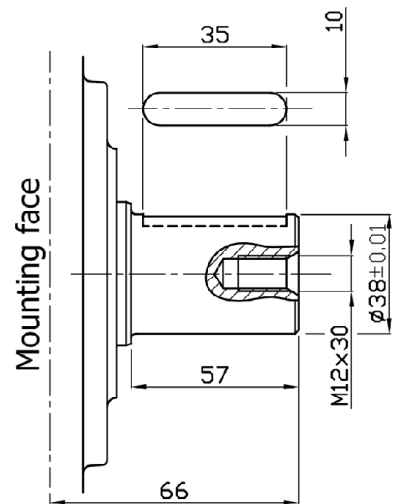
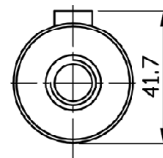
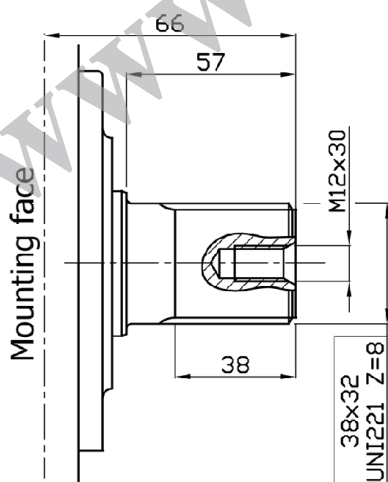
IAM 200/PH-250/PH-300/PH-350/PH-400/PH-500/PH-600/PH H2



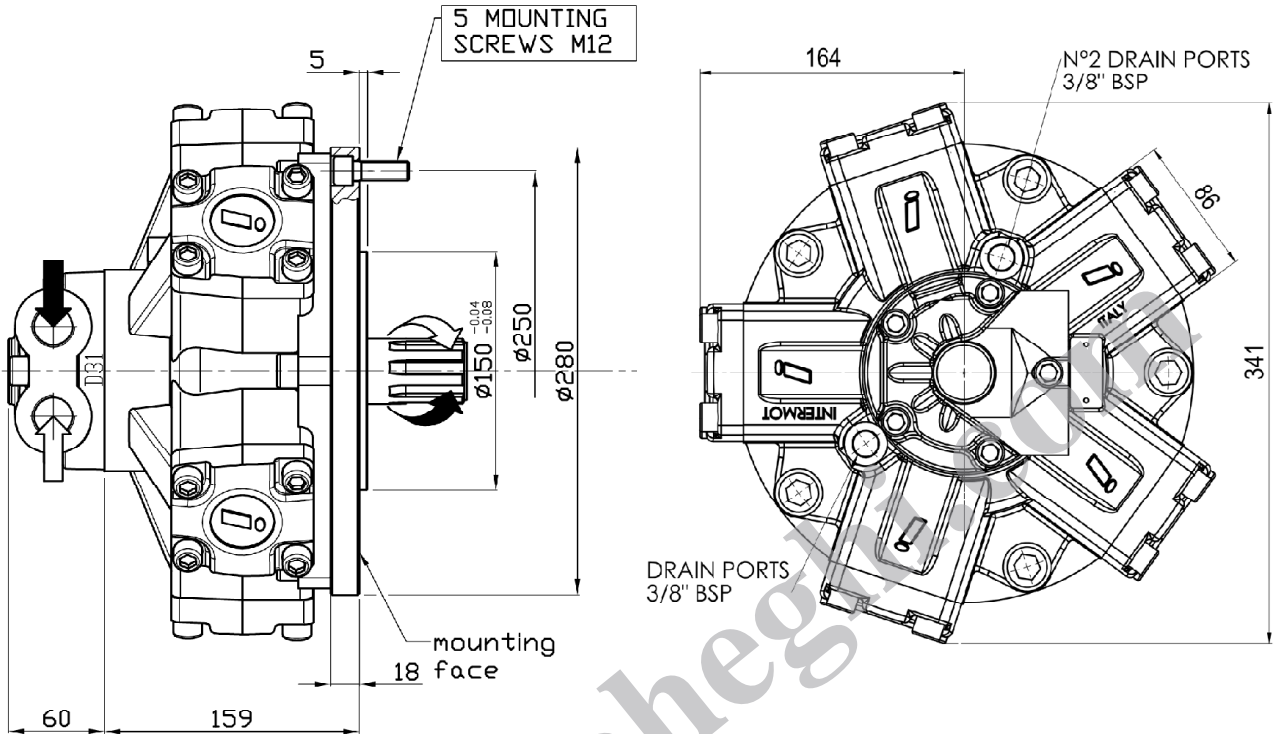
SHAFT OPTIONS

A0: Standard splined shaft

A2: Parallel shaft on request

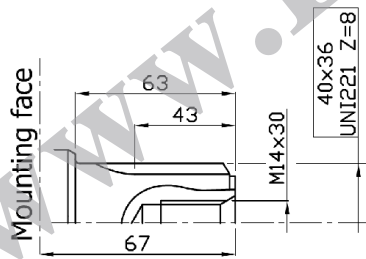


IAM 200/GM2-250/GM2-300/GM2-350/GM2-400/GM2-500/GM2-600/GM2 H2

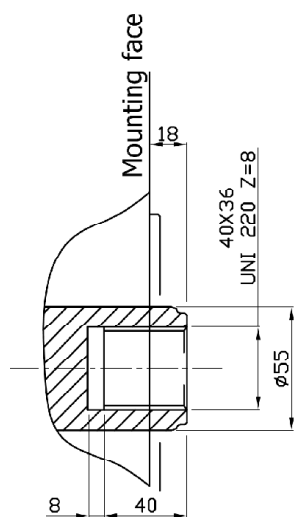


SHAFT OPTIONS

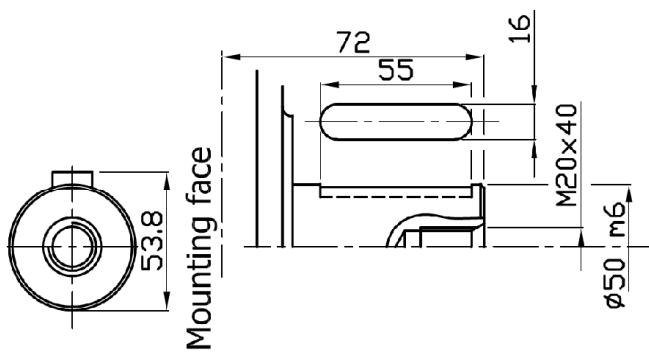
A0: Standard splined shaft



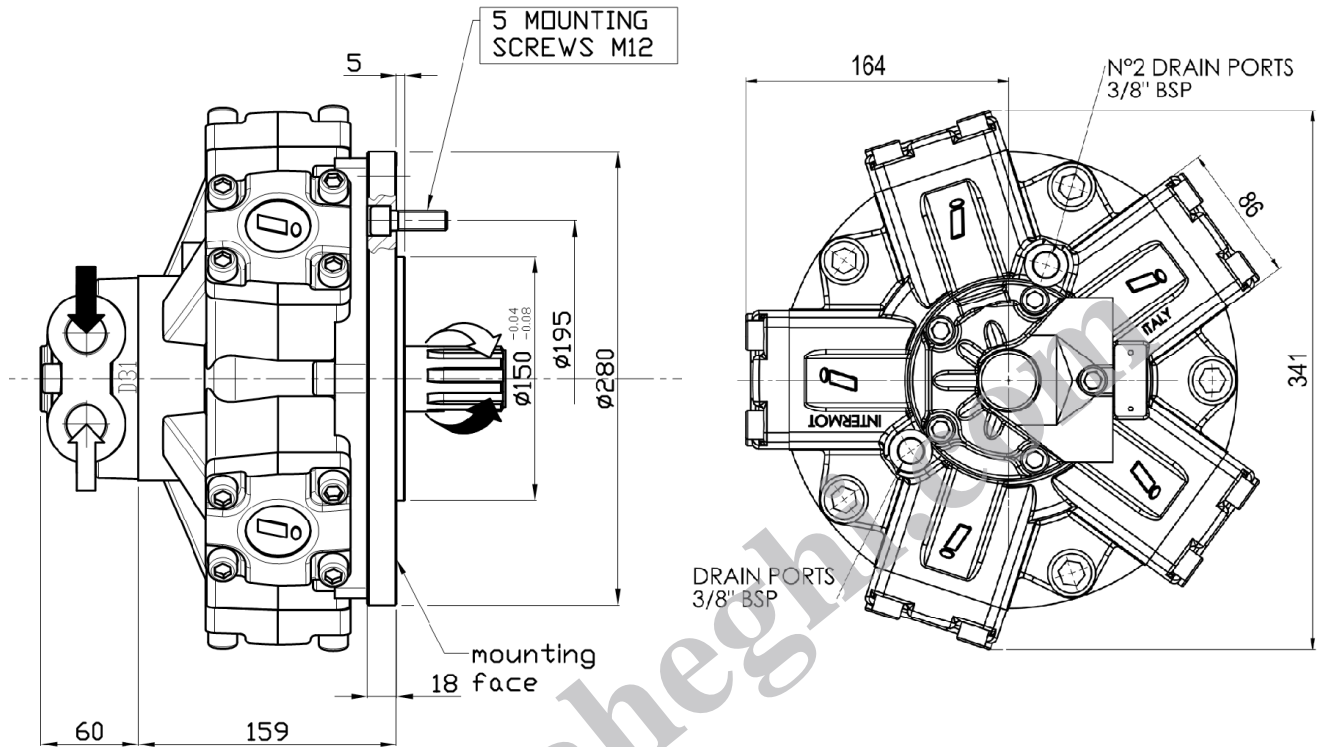
A3: Female shaft on request



A2: Parallel shaft on request

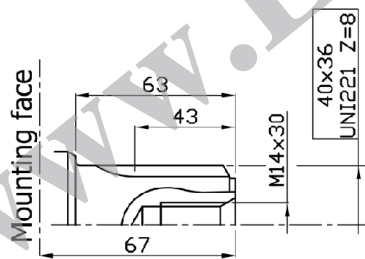


IAM 200/S-250/S-300/S-350/S-400/S-500/S-600/S H2

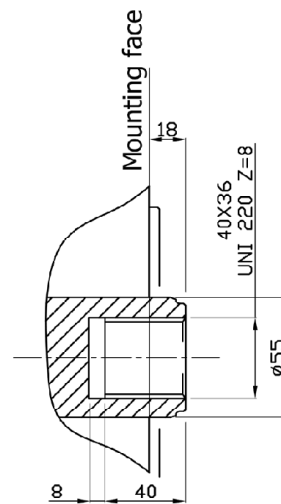


SHAFT OPTIONS

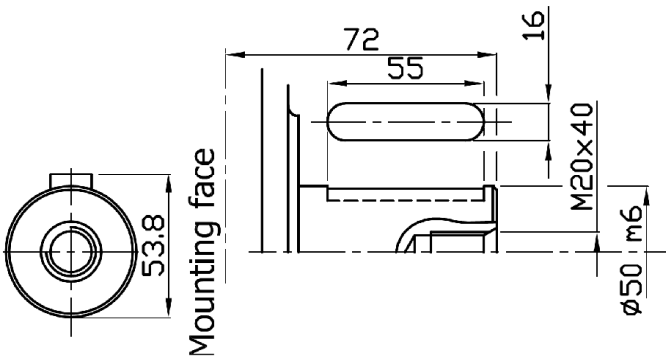
A0: Standard splined shaft



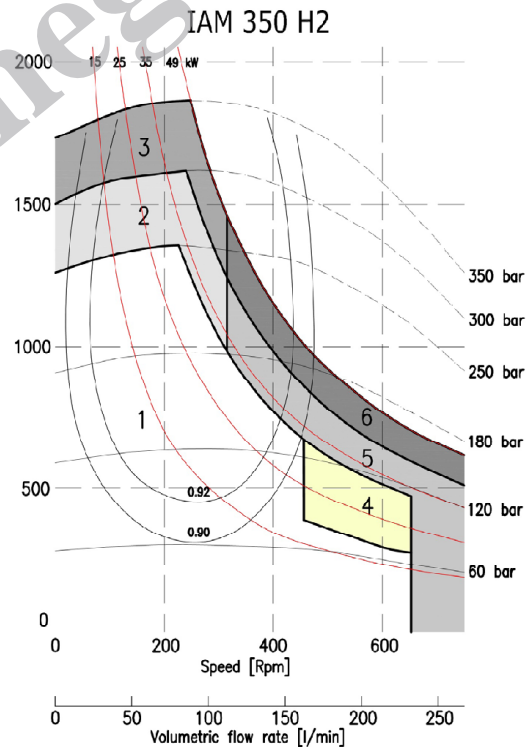
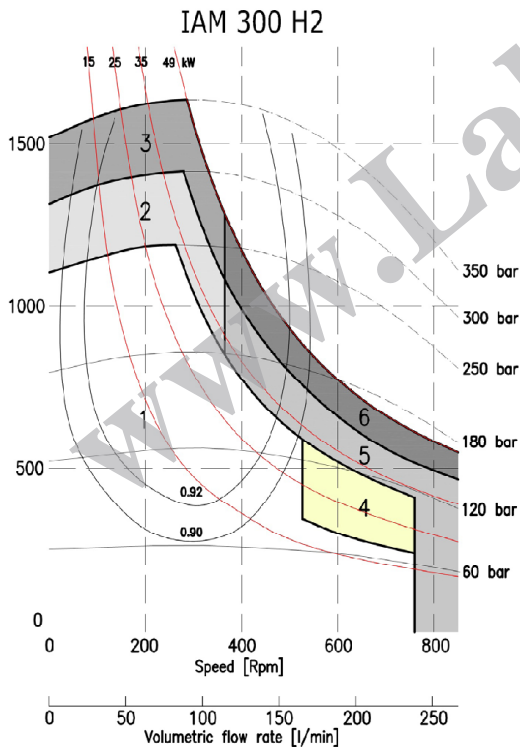
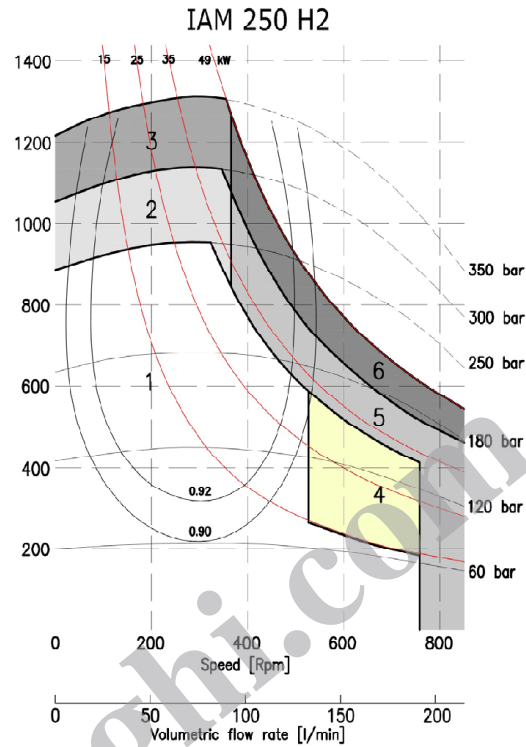
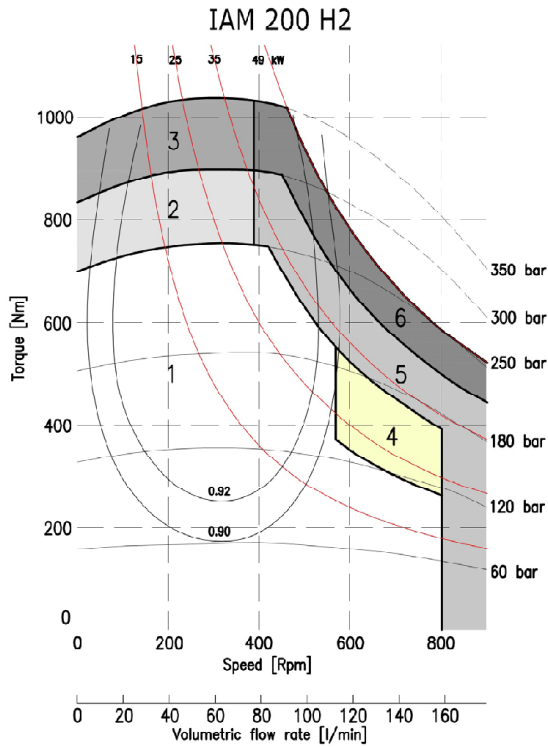
A3: Female shaft on request



A2: Parallel shaft on request

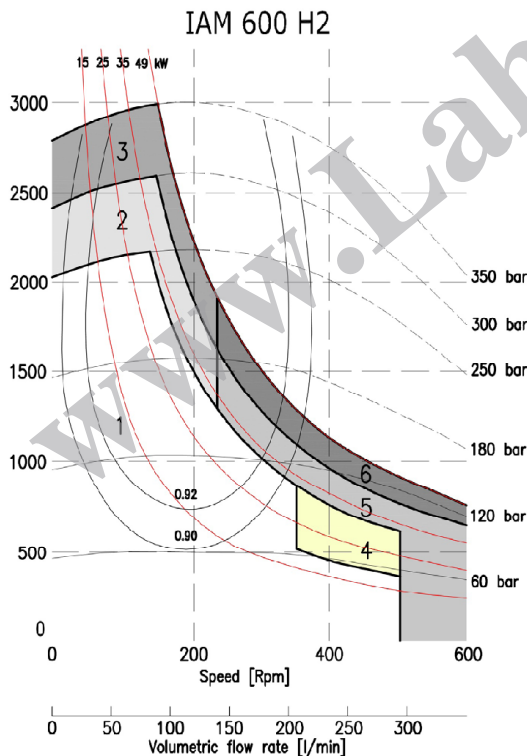
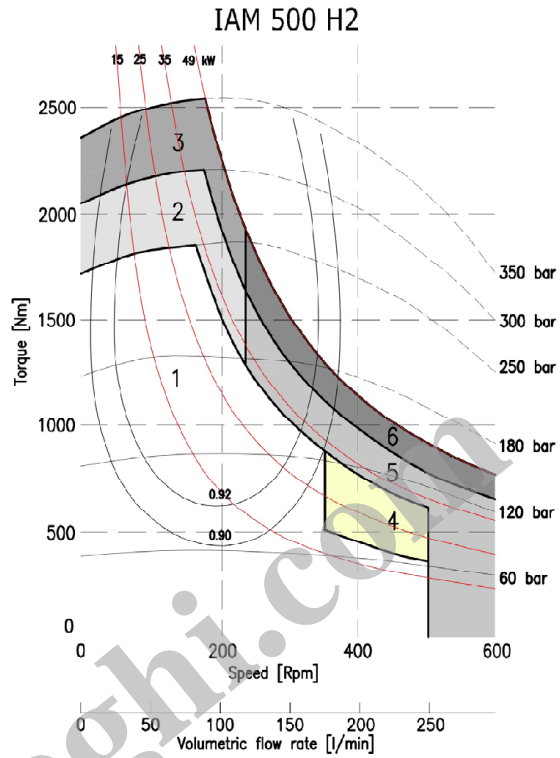
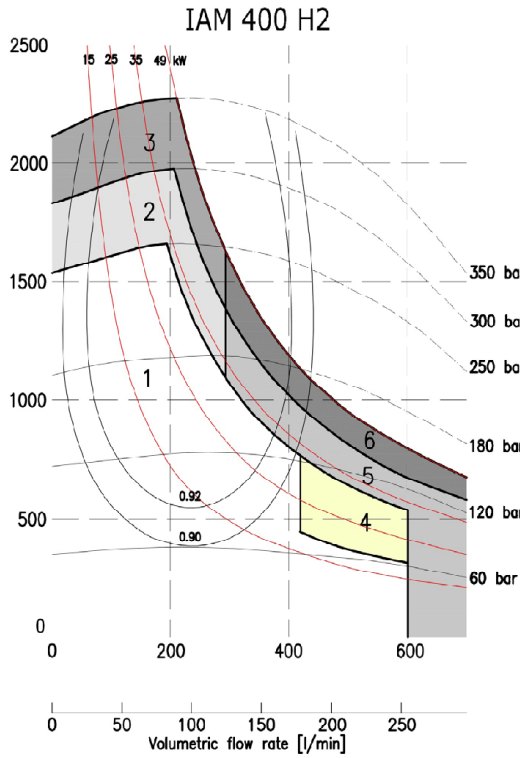


IAM H2 - POWER CHARTS



1	Continuous operation
2	Intermittent operation for period 3-5 minutes every 10-15 minutes
3	Intermittent operation for very short period (3-5 seconds every 10-15 minutes)

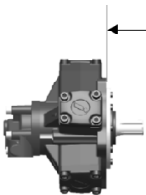
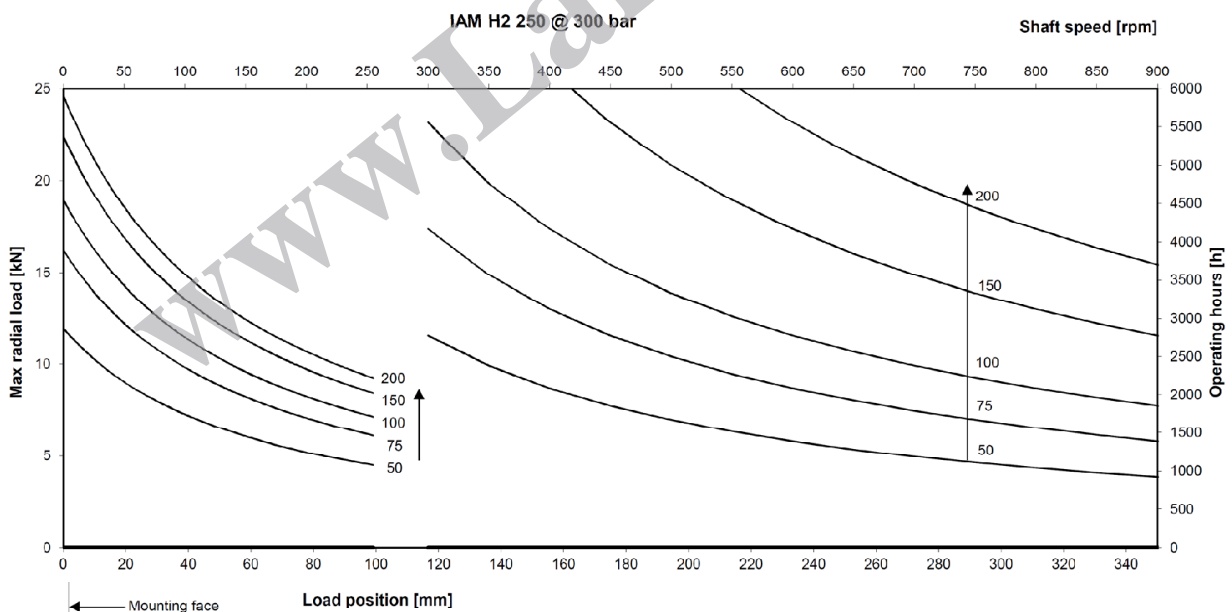
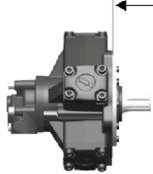
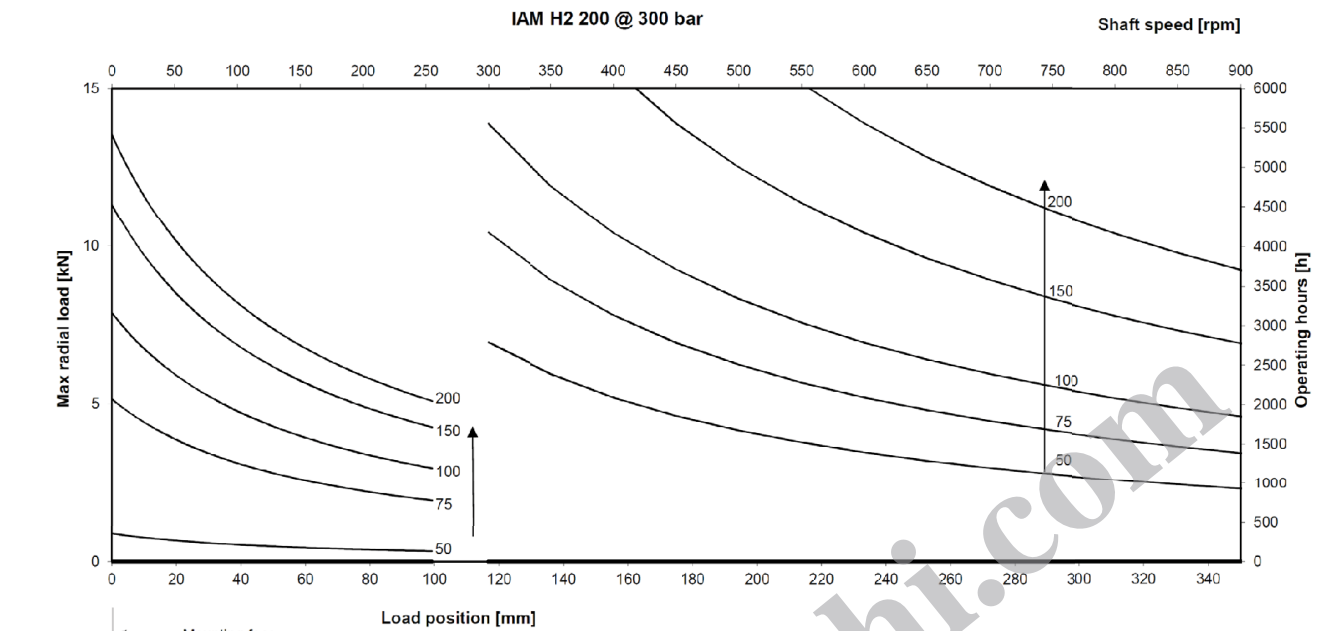
4	Continuous operation with flushing
5	Intermittent operation for period 3-5 minutes every 10-15 minutes with flushing
6	Intermittent operation for very short period (3-5 seconds every 10-15 minutes) with flushing

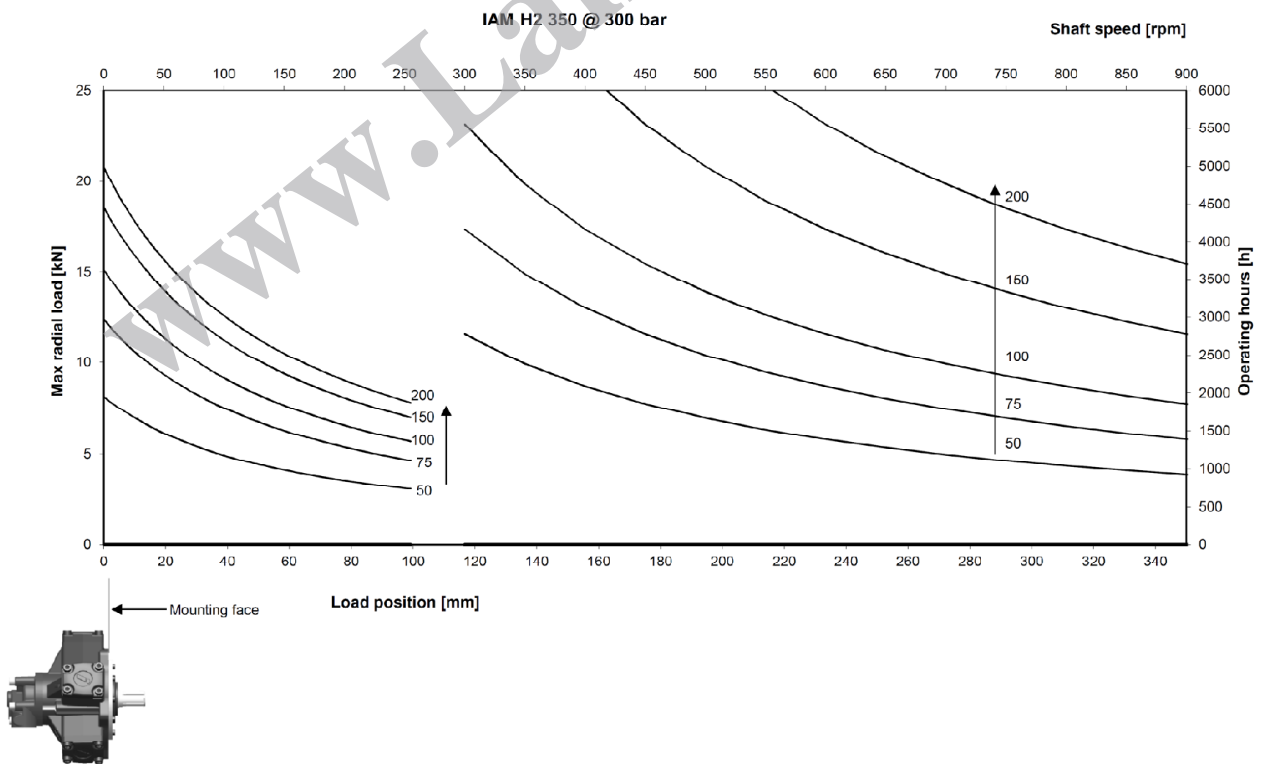
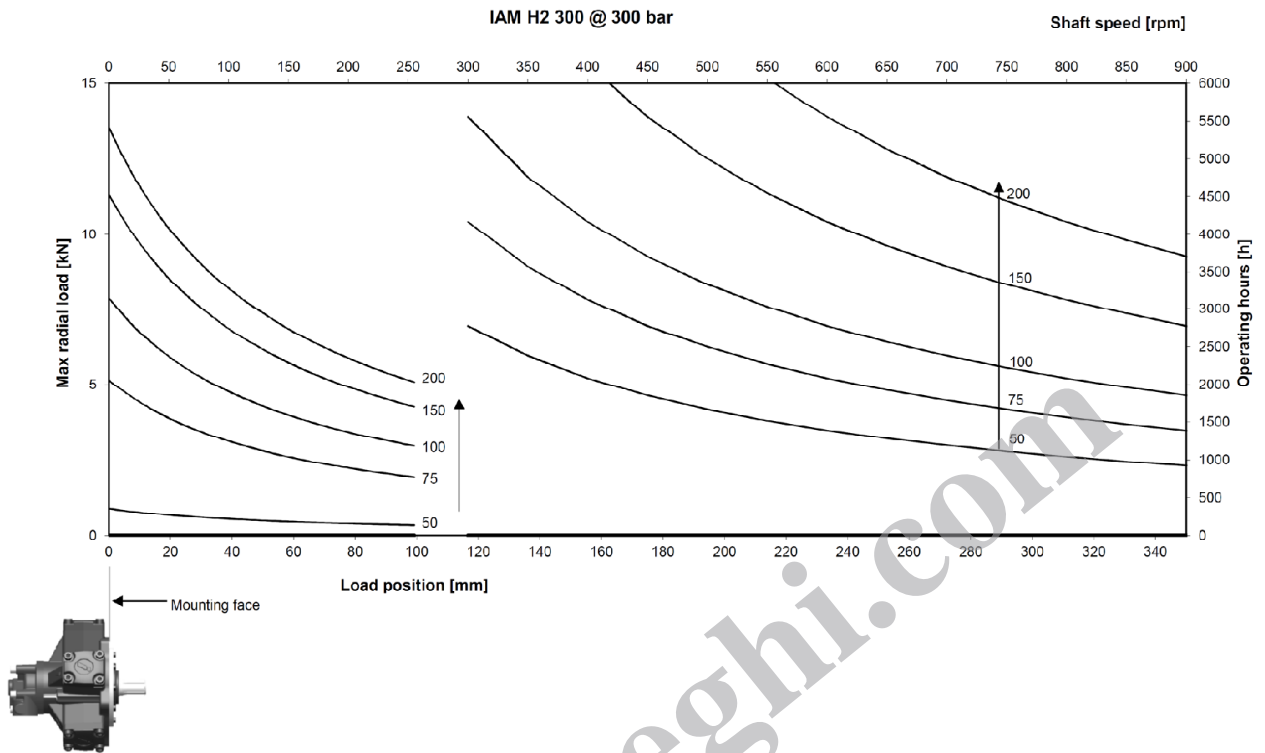


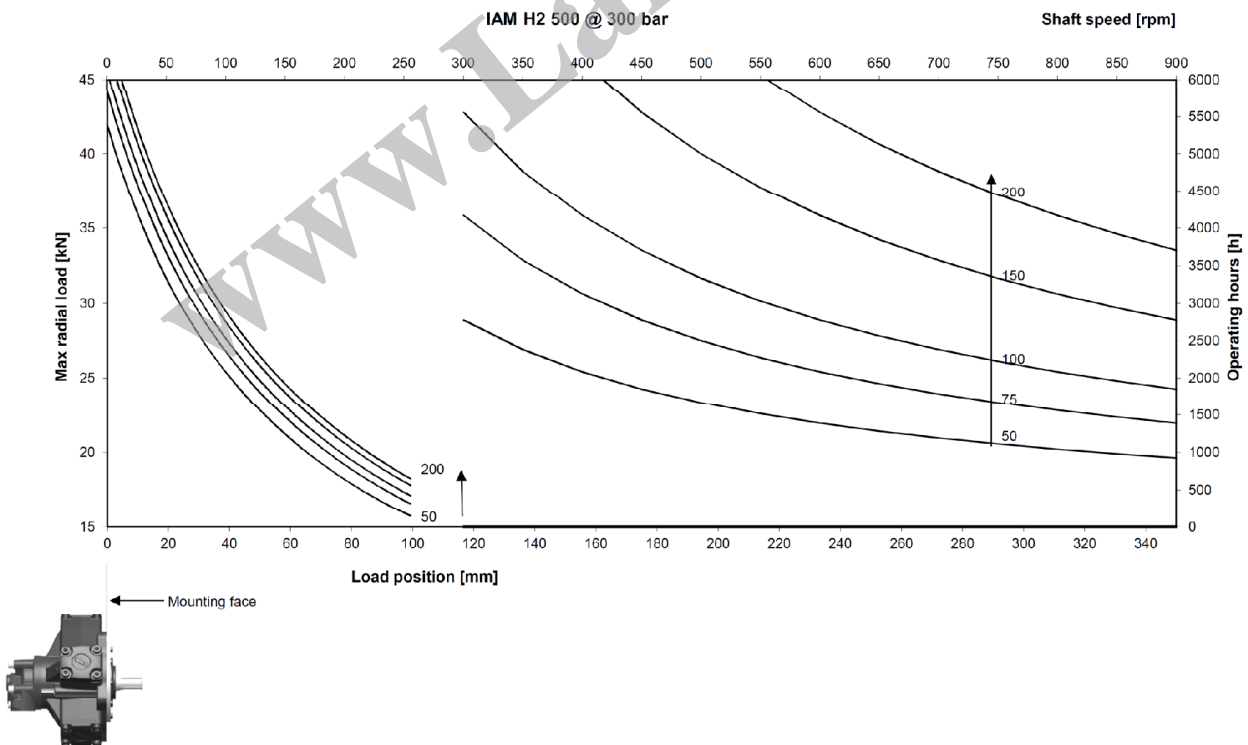
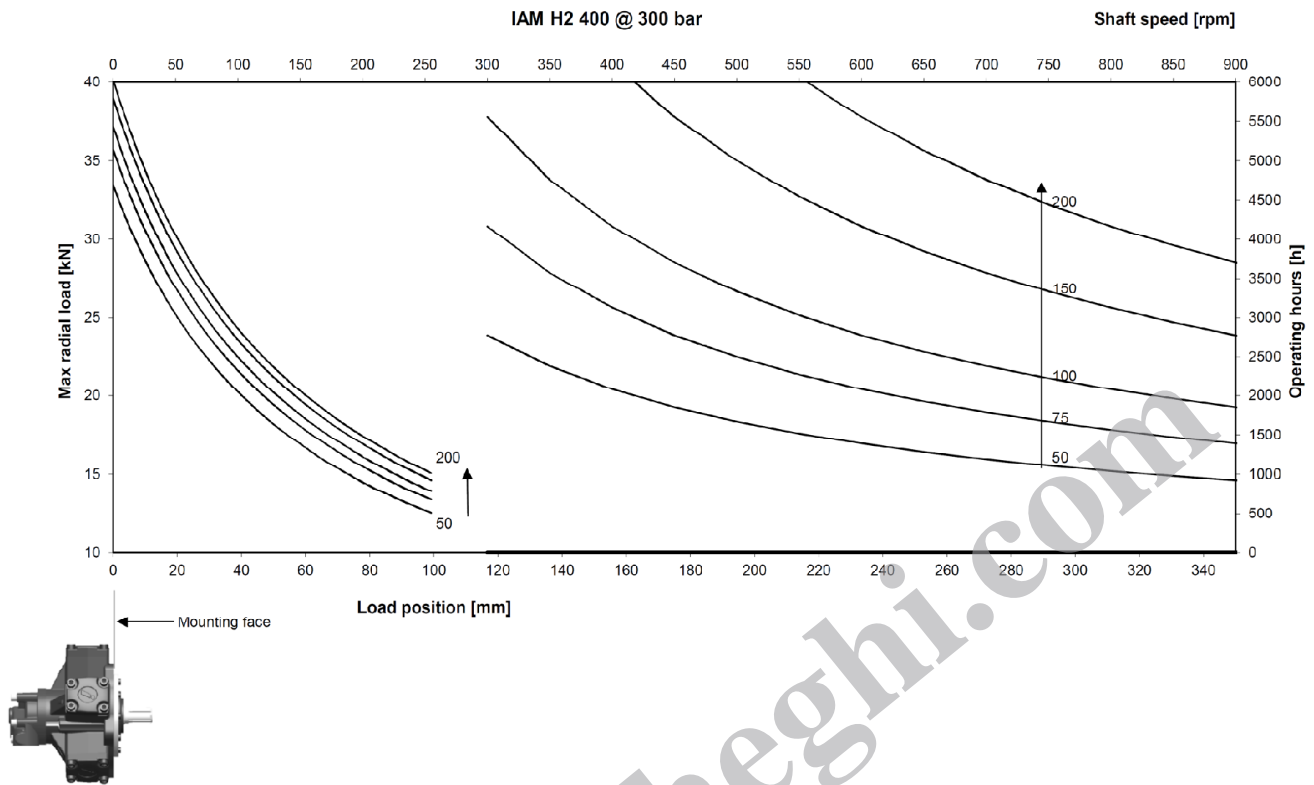
1	Continuous operation
2	Intermittent operation for period 3-5 minutes every 10-15 minutes
3	Intermittent operation for very short period (3-5 seconds every 10-15 minutes)

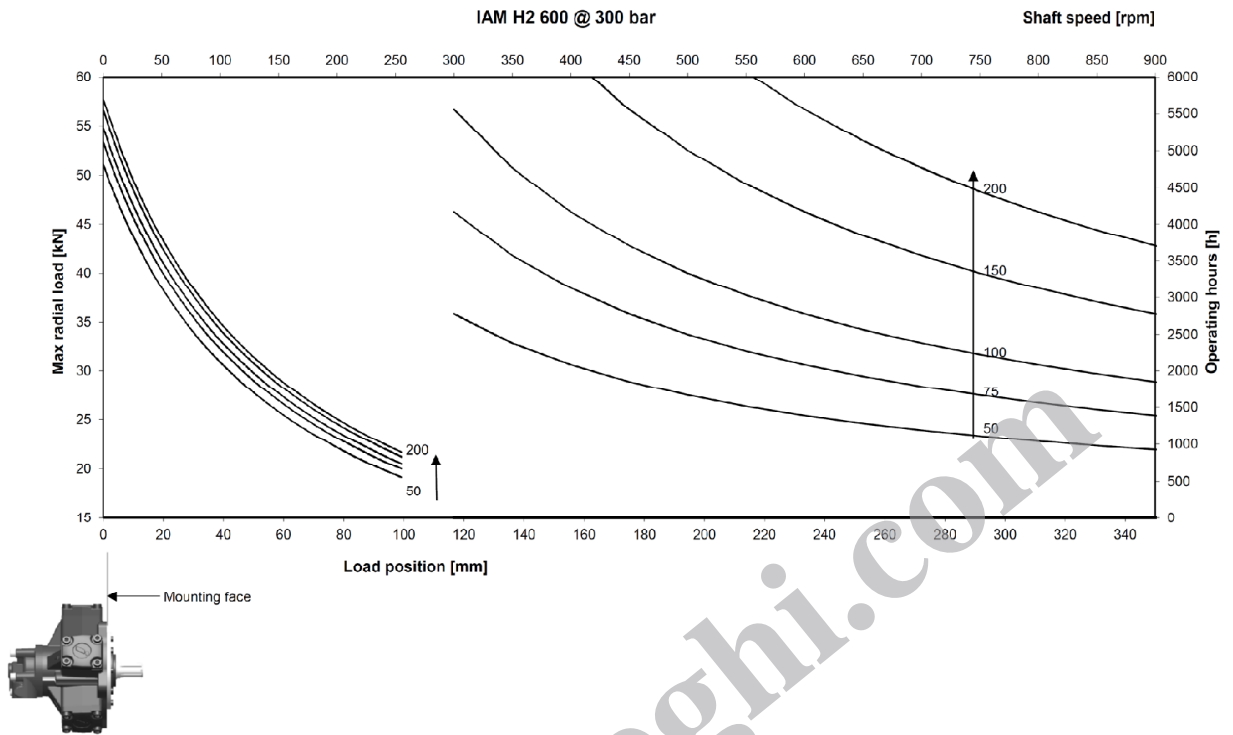
4	Continuous operation with flushing
5	Intermittent operation for period 3-5 minutes every 10-15 minutes with flushing
6	Intermittent operation for very short period (3-5 seconds every 10-15 minutes) with flushing

IAM H2 - SIDE LOAD CHARTS









www.Laheghi.com

IAM H2- ORDERING INSTRUCTIONS

IAM	---	/---	H2	A_	D_--	---	SB_--
Model IAM							
Displacement 200 cc/rev 250 cc/rev 300 cc/rev 350 cc/rev 400 cc/rev 500 cc/rev 600 cc/rev							
Interchangeability /C /B10 /PH /GM2 /S							
Housing H2							
Shaft A0 – Standard splined shaft A1 – Special splined shaft A2 – Parallel keyed shaft A3 – Female shaft							
Distributor D31 – 3/4" BSP D31G – 3/4" BSP D310 – 1" BSP D40 – 1" BSP D47 – SAE 1" 3000 psi flange							
Tachometer K TA TB EST							
Spline billet SB2 – 32 UNI 221 SB3 – 36 UNI 221 SB15 – 42 UNI 221							

EXAMPLE :

IAM 400 H2 A0 D31G

IAM 200/C H2 A0 D40 K SB2